

ST. TAMMANY PARISH COUNCIL

ORDINANCE

ORDINANCE CALENDAR NO: 4708

ORDINANCE COUNCIL SERIES NO: _____

COUNCIL SPONSOR: GOULD/BRISTER

PROVIDED BY: PLANNING

INTRODUCED BY: _____

SECONDED BY: _____

ON THE 12 DAY OF JANUARY, 2012

AN ORDINANCE AMENDING THE OFFICIAL ZONING MAP OF ST. TAMMANY PARISH, LA, TO RECLASSIFY A CERTAIN PARCEL OF LAND LOCATED ON THE EAST SIDE OF LA HIGHWAY 450, NORTH OF ED WILLIAMS ROAD EAST, BEING 12020 HIGHWAY 450, AND WHICH PROPERTY COMPRISES A TOTAL 4.72 ACRES OF LAND MORE OR LESS, FROM ITS PRESENT A-1 (SUBURBAN DISTRICT) TO AN A-2 (SUBURBAN DISTRICT). (WARD 2, DISTRICT 3) (ZC11-12-103)

WHEREAS, the Zoning Commission of the Parish of St. Tammany after hearing in accordance with law, Case No. ZC11-12-103, has recommended to the Council of the Parish of St. Tammany, Louisiana, that the zoning classification of the above referenced area be changed from its present A-1 (Suburban District) to an A-2 (Suburban District) see Exhibit "A" for complete boundaries; and

WHEREAS, the St. Tammany Parish Council has held its public hearing in accordance with law; and

WHEREAS, the St. Tammany Parish Council has found it necessary for the purpose of protecting the public health, safety and general welfare, to designate the above described property as A-2 (Suburban District).

THE PARISH OF ST. TAMMANY HEREBY ORDAINS, in regular session convened that:

SECTION I: The zoning classification of the above described property is hereby changed from its present A-1 (Suburban District) to an A-2 (Suburban District).

SECTION II: The official zoning map of the Parish of St. Tammany shall be and is hereby amended to incorporate the zoning reclassification specified in Section I hereof.

REPEAL: All ordinances or parts of Ordinances in conflict herewith are hereby repealed.

SEVERABILITY: If any provision of this Ordinance shall be held to be invalid, such invalidity shall not affect other provisions herein which can be given effect without the invalid provision and to this end the provisions of this Ordinance are hereby declared to be severable.

EFFECTIVE DATE: This Ordinance shall become effective fifteen (15) days after adoption.

[REMAINDER OF PAGE INTENTIONALLY LEFT BLANK]

MOVED FOR ADOPTION BY: _____ SECONDED BY: _____

WHEREUPON THIS ORDINANCE WAS SUBMITTED TO A VOTE AND RESULTED IN THE FOLLOWING:

YEAS: _____

NAYS: _____

ABSTAIN: _____

ABSENT: _____

THIS ORDINANCE WAS DECLARED DULY ADOPTED AT A REGULAR MEETING OF THE PARISH COUNCIL ON THE 2 DAY OF FEBRUARY, 2012; AND BECOMES ORDINANCE COUNCIL SERIES NO _____.

MARTIN W. GOULD, JR., COUNCIL CHAIRMAN

ATTEST:

THERESA L. FORD, COUNCIL CLERK

PATRICIA P. BRISTER, PARISH PRESIDENT

Published Introduction: JANUARY 5, 2012

Published Adoption: _____, 2012

Delivered to Parish President: _____, 2012 at _____

Returned to Council Clerk: _____, 2012 at _____

EXHIBIT "A"

ZC11-12-103

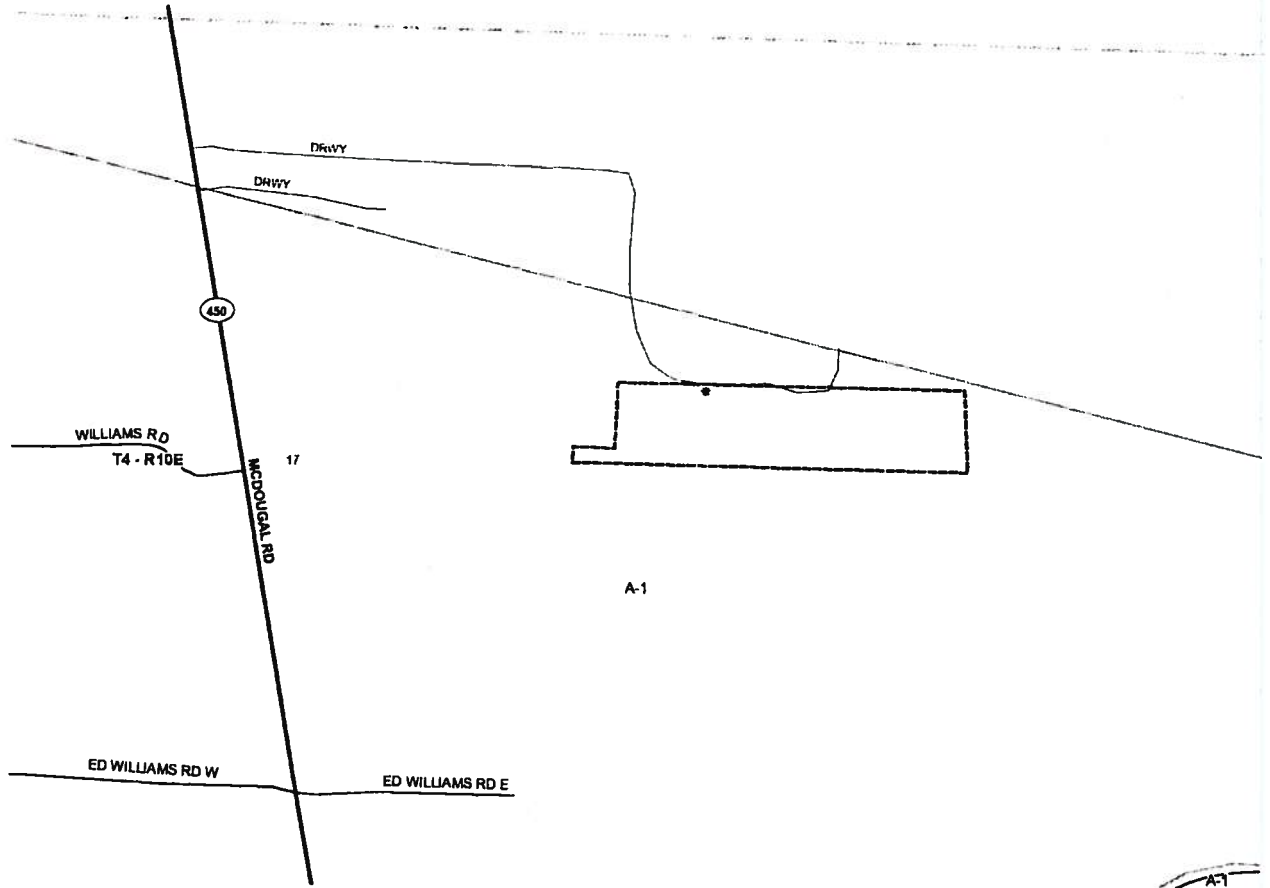
ALL THAT CERTAIN PIECE OR PARCEL OF LAND, lying and being situated in Section 17, Township 4 South, Range 10 East, St. Tammany Parish, Louisiana and being more fully described as follows: .

From the Section corner common to Sections 7, 8, 17 and 18 . Township 4 South, Range 10 East, Greensburg District, Louisiana run South 89 degrees 50 minutes 52 seconds East, 1815.76 feet. Thence South 00 degrees 43 minutes 55 seconds West, 921.35 feet to the Point of Beginning.

From the Point of Beginning run North 89 degrees 29 minutes 26 seconds East, 920.90 feet to a point; thence South 04 degrees 00 minutes 43 seconds East 217.69 feet to a point; South 89 degrees 38 minutes 23 seconds West, 1049.59 feet to a point; thence North 00 degrees 43 minutes 55 seconds East, 42.15 feet to a point; thence South 89 degrees 06 minutes 05 seconds East, 110.71 feet to a point; thence North 00 degrees 43 minutes 55 seconds East, 175.18 feet back to the Point of Beginning.

This tract contains 4.72 acres.

CASE NO.: ZC11-12-103
PETITIONER: Marsha Heisser
OWNER: Leroy Heisser
REQUESTED CHANGE: From A-1 (Suburban District) to A-2 (Suburban District)
LOCATION: Parcel located on the east side of LA Highway 450, north of Ed Williams Road east, being 12020 Highway 450, Franklinton ; S17,T4S,R10E; Ward 2, District 3
SIZE: 4.72 acres



7 B
18 17

